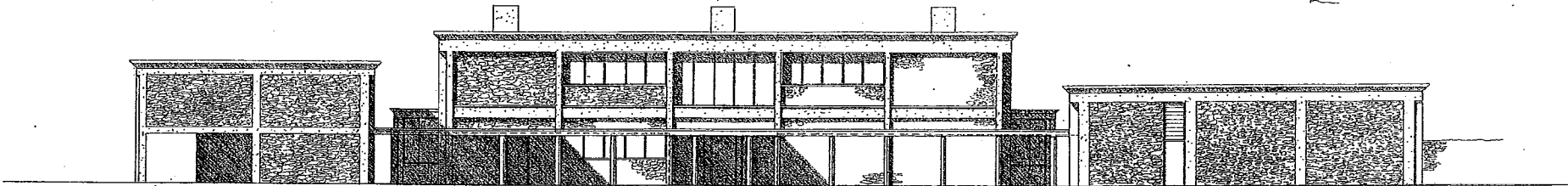
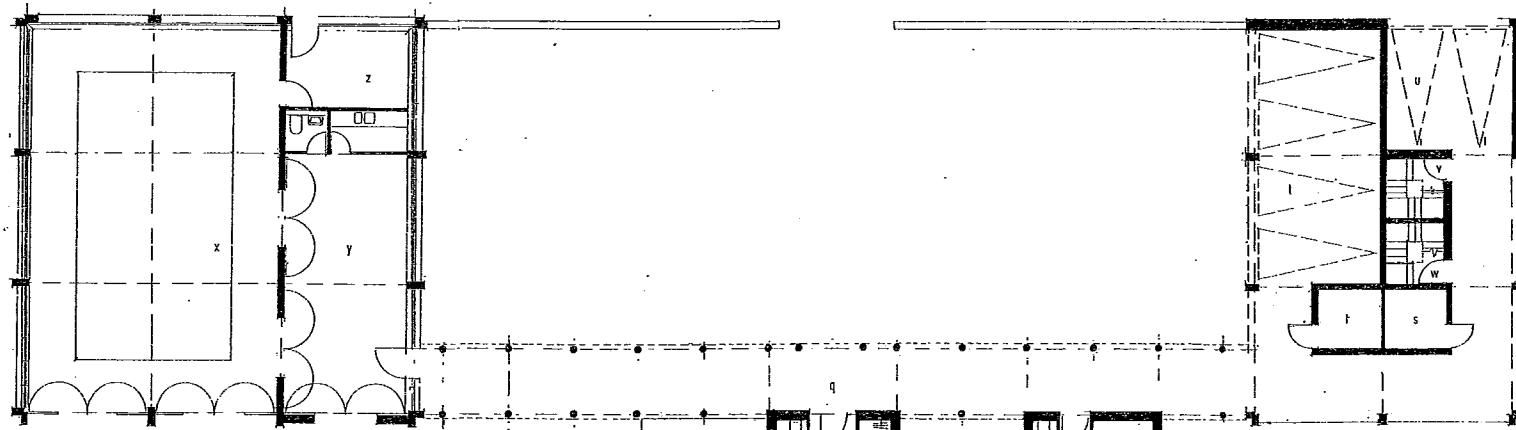


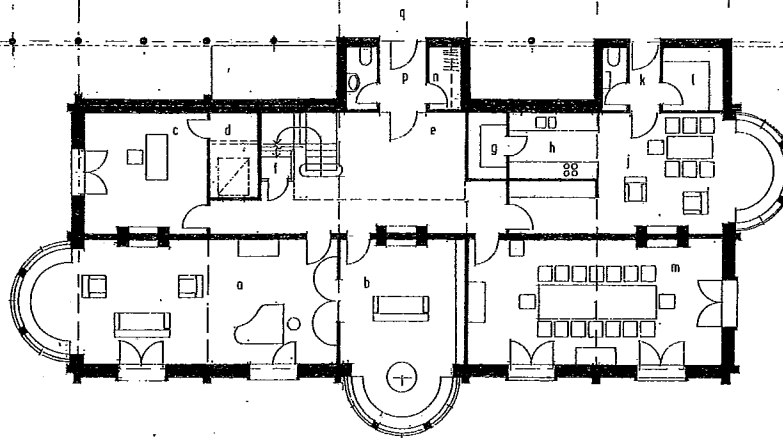
SOUTH ELEVATION



NORTH ELEVATION



GROUND FLOOR PLAN

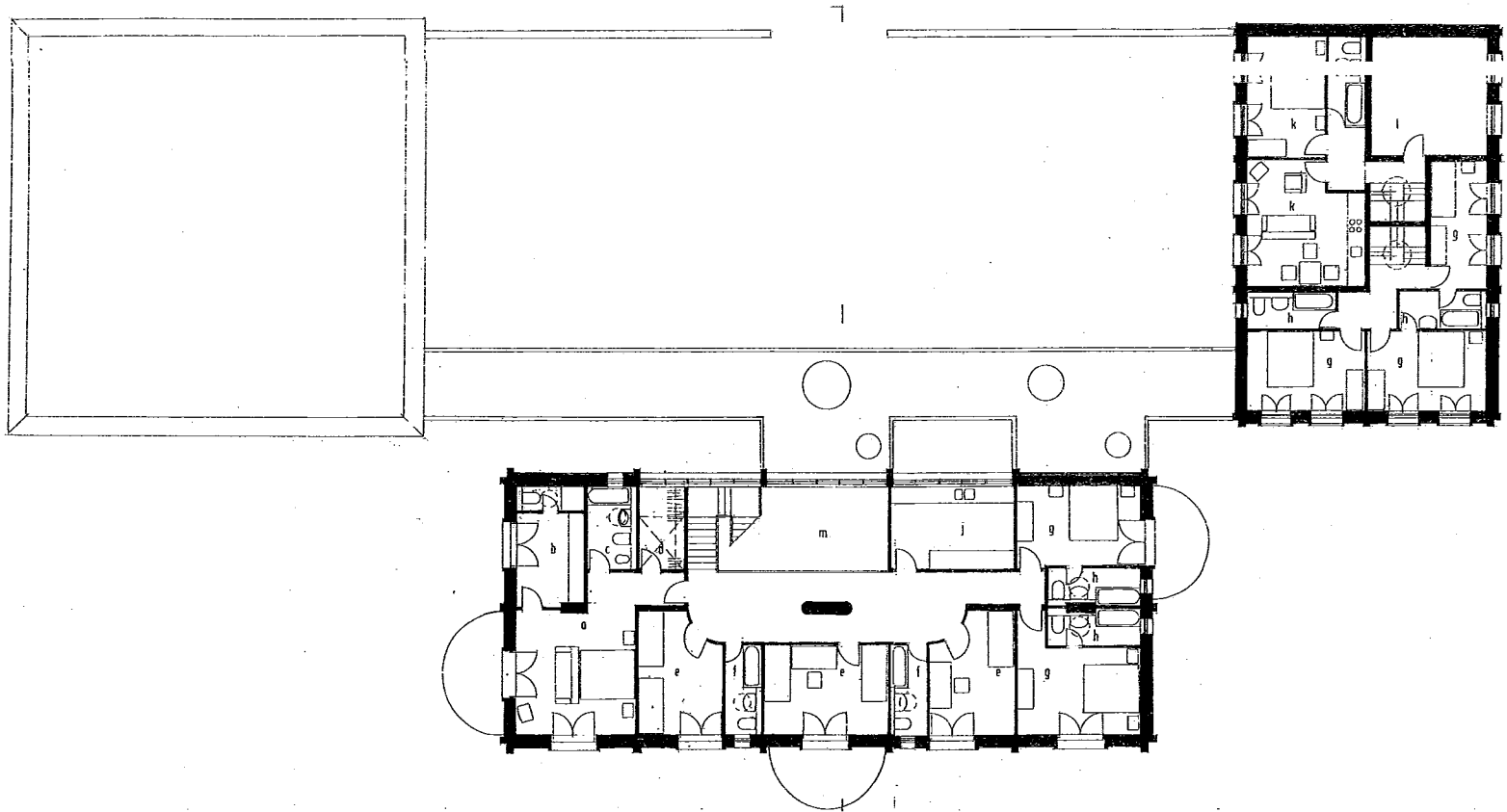
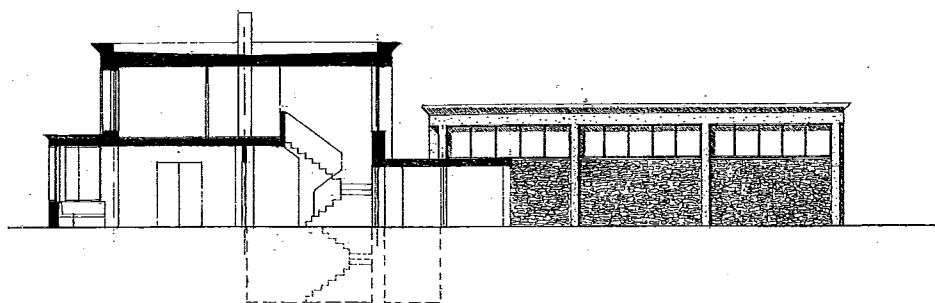
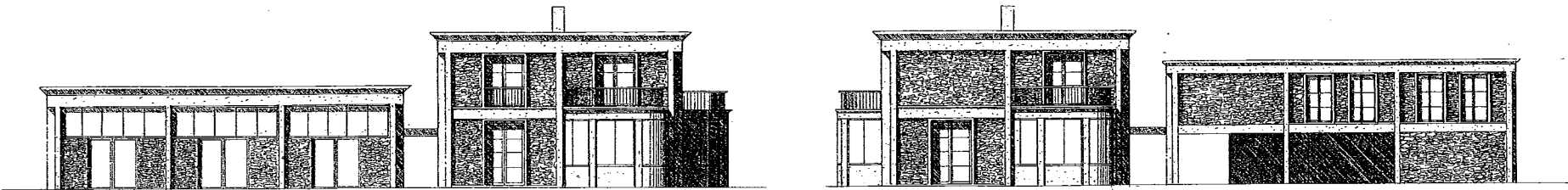


CONYGRE COURT

Country House Design Competition

Ground Floor Plan
South and North Elevations
1:100

- Key:
- a: principal living room
 - b: informal living room and library
 - c: study
 - d: store for study/future lift shaft
 - e: double height entrance hall
 - f: stair to basement store and plant area
 - g: walk-in larder
 - h: galley kitchen and crockery cupboard
 - j: family living/dining area in kitchen
 - k: back hall
 - l: boot room
 - m: formal dining room
 - n: cloakroom
 - p: entrance lobby
 - q: covered walkway
 - r: bicycle store
 - s: garden furniture store
 - t: parking for guests and staff
 - v: stair to staff accommodation
 - w: stair to guest accommodation
 - x: swimming pool
 - y: 'barn' for games, with WC and kitchenette
 - z: plant room for swimming pool and house



CONYGRE COURT
Country House Design Competition

Upper Floor Plan
West and East Elevations and Section
1:100

- Key:
- a: master bedroom
 - b: master dressing room
 - c: master bathroom
 - d: walk-in clothes closet - possible lift shaft
 - e: child's bedroom
 - f: child's bathroom
 - g: guest bedroom
 - h: guest bathroom
 - j: laundry/sewing room
 - k: staff accommodation
 - l: additional staff accommodation, or store
 - m: void over hall
 - n: coursed rubble stone walling
 - p: reinforced concrete frame, brushed to expose the aggregate

James Dunnett Architects
142 Barnsbury Road, London N1 0ER
Tel: 020 7833 3451 Fax: 020 7833 2126
e-mail: jidunnett@aol.com