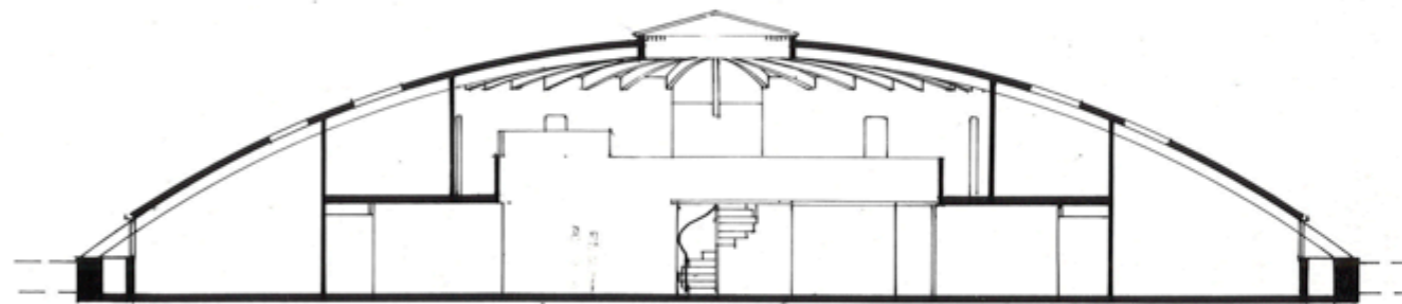
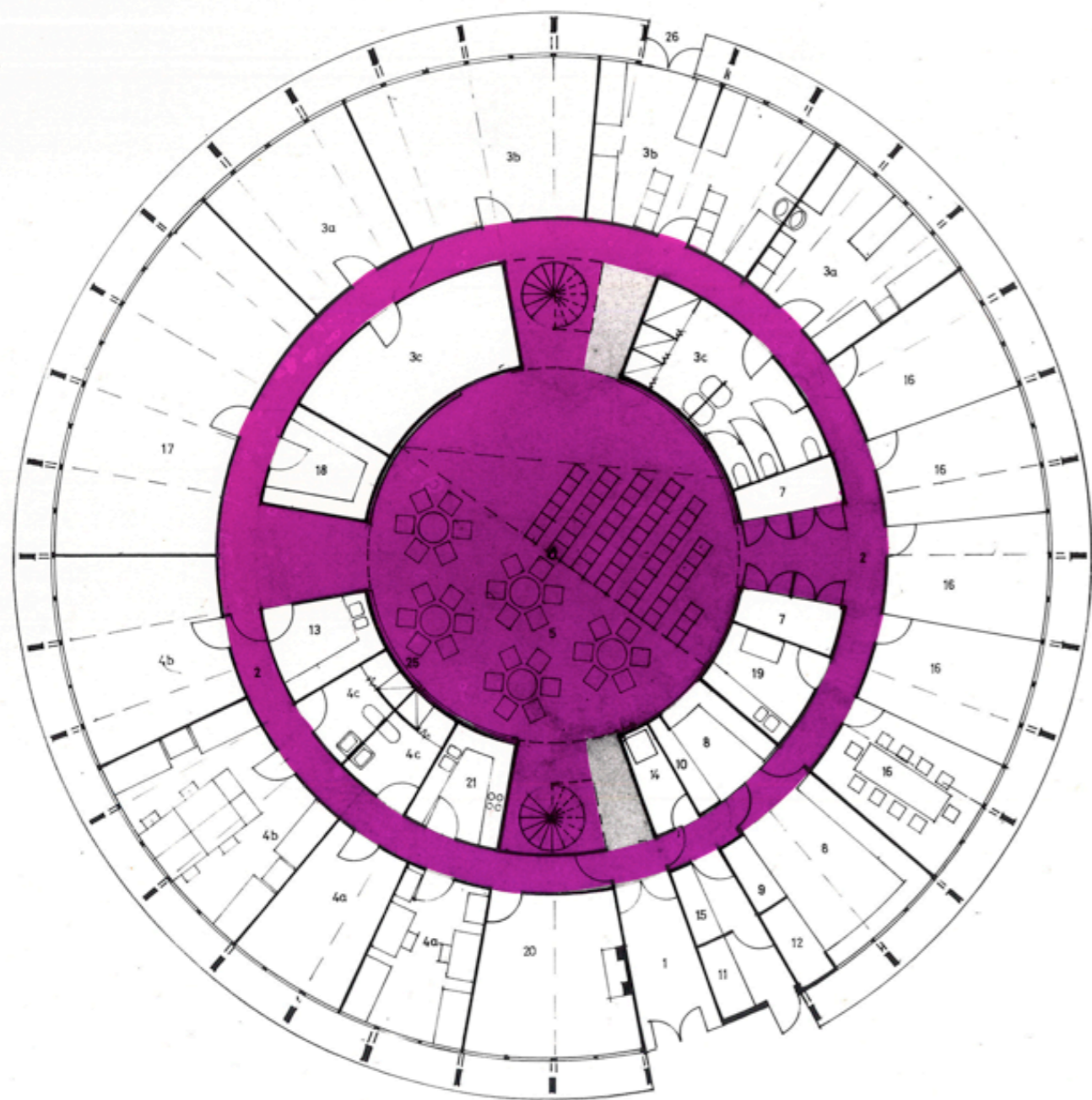


ELEVATION



SECTION



GROUND FLOOR

- | | | | |
|-------------------------------|----------------------------------|-------------------|-------------------------|
| 1 entrance lobby | 4a resident accomodation: 2 beds | 7 equipment store | 12 cartons/bottle store |
| 2 circulation | 4b " " : 4 beds | 8 kitchen/severy | 13 laundry |
| 3a guest accomodation: 4 beds | 4c " " : bathroom/WCs | 9 dry goods store | 14 boiler room (gas) |
| 3b " " : 6 beds | 5 community room | 10 vegetable " | 15 fuel store |
| 3c " " : bathroom/WCs | 6 lights/sound/projection booth | 11 refuse area | 16 study room |

FIRST FLOOR

- | | |
|------------------------------|-----------------------------|
| 17 craft room | 22 extract fan/service duct |
| 18 materials store | 23 tanks |
| 19 printing room | 24 void |
| 20 common/residents' room | 25 sliding screen |
| 21 tea/self catering kitchen | 26 fire/secondary exit |